

STANLEY® FATMAX® OPEN MOUTH TOOL BAGS

- Ideal for carrying hand tools and other medium to small size items.
- Made of durable 600 x 600 denier polyester fabric.
- Rigid, waterproof plastic bottom keeps tools dry and protected from wet surfaces.
- Reinforced handle area enables durability even with extra heavy loads.
- Central zipper allows for quick access and visibility to contents when opened.
- Multiple external pockets for organization.



Product #	# of Pockets	Height (in)	Width (in)	Overall Length (in)	Weight (lbs)
FMST514150	6	6-7/16	9	17-7/8	2.52
518150M	16	9-7/8	10-3/8	19-1/4	3.19

*Tools and accessories not included

STANLEY® FATMAX® OPEN TOTE – 18"

- Open bag for quick access to contents.
- Made of durable 600 x 600 denier polyester fabric.
- Rigid, waterproof plastic bottom keeps tools dry and protected from wet surfaces.
- Durable ballistic nylon covered compartment for saw with adjustable Velcro strap.
- Rubber-gripped steel handle for quick transport.
- Ideal for hand tools and other small items commonly used by electricians, plumbers and woodworkers.
- Multiple compartments, saw pocket and level holder for organization.
- Steel holder for measure tape.



Product #	Height (in)	Width (in)	Overall Length (in)	Weight (lbs)
518160M	13-3/4	10-1/4	18-7/8	4.43

STANLEY® FATMAX® TOOL VEST

- Tool compartments for easy carriage and convenient access to frequently used tools.
- Personal storage compartments for personal belongings like mobile phone, iPod, etc.
- Air mesh material enables vest to "breathe", allows air movement so draws perspiration away for comfort throughout the day.
- Multiple use compartments for all storage needs.
- Adjustable shoulder straps for maximum comfort and secure fitting.
- Light reflective strip for better visibility.



Product #	Length (in)	Height (in)	Width (in)	Weight (lbs)
FMST530201	17	3-1/2	12	2.10



STANLEY® TECHNICIAN TOOL BAG

- Made of durable 600 x 600 denier polyester fabric that is hardwearing, strong and durable.
- Multiple internal and external pockets for organization.
- Covered front pocket for secure storage of small parts.



Product #	Height (in)	Width (in)	Overall Length (in)
STST70574	9-7/8	5-1/8	11-7/8

STANLEY® FATMAX® STRUCTURAL FOAM TOOL BOXES

- Extra heavy-duty, professional tool box.
- IP53 water/dust resistance.
- Ideal for carrying power tools and hand tools.
- Ergonomic hand lifting recesses incorporated in the body for carrying heavy loads.
- Integrated V-grooves with ruler on top of lid holds materials such as lumber and pipes in place for cutting.
- Cantilever organization, Heavy-duty plastic slides with ball bearing effect (100% extension).
- Large metal rust proof latches with padlock eye.



Product #	Capacity (gal)	Height (in)	Width (in)	Overall Length (in)	Weight (lbs)
FMST18001	9	9-13/64	12-7/64	17-29/32	8.43

STANLEY® FATMAX® STRUCTURAL FOAM TOOL BOXES

- Extra heavy-duty, professional tool box.
- IP53 water/dust resistance.
- Ideal for carrying power tools and hand tools.
- Ergonomic hand lifting recesses incorporated in the body for carrying heavy loads.
- Integrated V-grooves with ruler on top of lid holds materials such as lumber and pipes in place for cutting.
- Cantilever organization, Heavy-duty plastic slides with ball bearing effect (100% extension).
- Large metal rust proof latches with padlock eye.



Product #	Capacity (gal)	Height (in)	Width (in)	Overall Length (in)	Weight (lbs)
023001W	6	10-1/2	11-3/4	22-3/4	7.00
028001L	9	11-1/2	12-1/4	28	10.00

STANLEY® FATMAX® METAL & PLASTIC TOOL BOXES

- Tough material combination and embossed logo branding - tough resin combined with metal and long-lasting branding.
- Tall tool box with a vertical storage unit for organization and easy access.
- Long metal hinge to carry the heavy loads.
- Large metal latches – heavy-duty, strong, rustproof.
- Portable tray for hand tools and small parts.
- Holes ready for inserting a lock for security of your tools.
- Integrated V-grooves on top lid for any onsite sawing and adjusting needs.
- Portable tote tray – 3/4 length design to allow storage of large tools.



Product #	# of Compartments	Capacity (gal)	Height (in)	Width (in)	Overall Length (in)	Weight (lbs)
023180R	2	9	11-7/16	11-1/2	23	7.70
026180R	2	10.3	11-7/16	11-1/2	26	8.80
FMST20061	2	4.4	11-1/8	8-11/16	19-5/8	5.28

STANLEY® SERIES 2000 TOOL BOXES WITH PLASTIC LATCH

- Two lid organizers for small parts storage – accessible without opening the tool box.
- Built-in pad lock eye for small locks helps keep contents secure.
- Tote tray.
- Tools and accessories not included.



Product #	# of Compartments	Capacity (gal)	Height (in)	Width (in)	Overall Length (in)	Weight (lbs)
STST13011	4	1.1	5-1/4	7-1/4	12-1/2	1.10
016011R	4	2.1	7-1/8	7-1/2	15-3/4	2.50



STANLEY® BASIC TOOL BOXES

- Polypropylene resin tool box.
- Single center latch allows for one-handed open and close.
- Small parts storage compartments on lid.



Product #	# of Compartments	Height (in)	Width (in)	Overall Length (in)	Weight (lbs)
STST16410	3	6-5/16	9-5/8	15-13/32	2.79
STST19410	3	9	10-1/4	18-7/8	5.10
STST24410	3	10-5/32	11	23-5/16	6.05

STANLEY® ONE-TOUCH TOOL BOX WITH POCKETS

- Secure single latch feature for one-handed open and close.
- Polypropylene resin construction for maximum durability.
- Detachable side pockets for accessibility and additional storage space.
- Removable tray for small tools and parts.
- Water seal for protection against weather and dust.
- 2 x 4 groove built into lid.



Product #	# of Compartments	Height (in)	Width (in)	Overall Length (in)
STST24081	3	11-3/16	11-3/16	23-5/8

STANLEY® 19" TOOL BOX WITH 12-1/2" TOOL BOX

- 19" spacious tool box.
- 2 top organizers for small parts storage - accessible without opening the tool box.
- Pad lock eye.
- Nickel-plated metal latches.
- Tote tray.
- With 12.5" tool box inside with top organizer for small parts storage, includes tray inside.



Product #	Capacity (gal)	Height (in)	Width (in)	Overall Length (in)	Weight (lbs)
060752C	1.06 & 3.70	9-3/4	10-1/4	19-1/4	5.07

STANLEY® PROFESSIONAL TOOL BOXES

- Extra-large capacity tool box with removable tray, suitable for large tools and accessories.
- Rubber shock-absorbing corners reduce wear and tear of box and help prevent abrasions to surroundings.
- Full-length aluminum handle for stability of heavy loads.
- Extra-large, nickel-plated metal latches with pad lock eyes.



Product #	Capacity (gal)	Height (in)	Width (in)	Overall Length (in)	Weight (lbs)
020300R	8.1	10-5/16	10-1/2	19-5/8	5.20
026301R	7.1	10-5/8	10-1/16	25-1/2	5.60

STANLEY® SERIES 2000 TOOL BOXES

- Two lid organizers for small parts storage – accessible without opening the tool box.
- Built-in pad lock eye for small locks helps keep contents secure.
- Soft, wide rubber-coated handle allows for easy and comfortable grip.
- Nickel-plated metal latches.
- Full-length tote tray.



Product #	Capacity (gal)	Height (in)	Width (in)	Overall Length (in)	Weight (lbs)
016013R	2.1	7-3/16	8-3/16	16	2.40
019151M	4.7	9-3/4	9-3/4	19	3.97
024013S	8.2	10-7/8	11-3/8	23-1/2	5.90

STANLEY® METAL TOOL BOXES

- Auto-latch for on handed operation.
- Long handle for easy carrying.
- Top drawer slides backwards for easy access (STST19501).
- Central locking mechanism for secure storage (STST19502).



Product #	# of Drawers	Height (in)	Width (in)	Overall Length (in)	Weight (lbs)
STST19500	–	12-3/16	11-5/8	22	9.32
STST19501	1	12-3/16	11-5/8	22	11.73
STST19502	2	12-3/16	11-5/8	22	14.63



STANLEY® CLICK 'N CONNECT™ ORGANIZERS

- Flexible Platform: Removable dividers for customized organization of tools and parts.
- Simple shape and proportions: For easy access to both hand and power tools.
- Removable, One-Hand Latches: Enable easy connecting/detaching.
- Lid Organizer: For small parts and accessories.



Product #	Description	Height (in)	Width (in)	Overall Length (in)	Weight (lbs)
STST19900	2-in-1 Toolbox	6	12	19	7.23
STST19950	Toolbox	6-5/8	12-1/4	19-7/8	4.02
STST14440	Organizer	11	3	19	3.11

STANLEY® METAL/PLASTIC ROLLING WORKSHOP

- 20" detachable metal plastic top tool box includes portable tray for small parts and hand tools – separates easily by pressing the front push button, enabling it to be transported when needed.
- Telescopic handle and large wheels for easy maneuverability.
- Ball bearing slides for smooth gliding and carrying heavy loads.
- Large bottom bin and drawer open up easily to form a workstation with access to all tools.
- 2 deep 4" drawers with ball bearing slides.
- Heavy-duty 7" wheels.



Product #	Capacity (gal)	Height (in)	Width (in)	Overall Length (in)	Weight (lbs)
020586R	14.1	28-1/4	15-3/4	22-1/8	25.30

STANLEY® FATMAX® 4-IN-1 MOBILE WORKSTATION

- 4 storage solutions in 1; includes tool box, part bins, portable tray and oversized lower bin for larger items.
- Tiered cantilever multi-level rolling system allows easy access to all 4 storage areas at the same time.
- Durable structural foam construction.
- The unit opens up easily using a single pull-up latch.
- Telescopic handle for ergonomic hold and easy maneuvering; can be lowered for storage.
- Four side handles allow to conveniently lift up above step on onto vehicle.
- Integrated V-groove on top tool box lid.
- Tool box latches are durable, metal latches.
- Heavy-duty wheels.
- Ball bearing slides for smooth opening even with heavy loads.
- Top part has a portable tray inside for hand tools.
- Middle part for small parts has removable dividers that allow to plan interior space according to your needs.
- Bottom bin is spacious for power tools.



Product #	Capacity (gal)	Height (in)	Width (in)	Overall Length (in)	Weight (lbs)
020800R	21.6	28-7/8	13-3/4	21-5/8	23.20

STANLEY® 3-IN-1 MOBILE WORK CENTER

- 3-in-1 – Bottom bin, middle organizer, top tool box.
- Each unit functions as stand alone.
- Removable tray allows enough space for larger tools to be stored underneath.
- Removable organizer for small parts organization; Unit can be used with and without it.
- Large bottom bin for larger hand tools and power tools.
- Metal front and side latches for Heavy-duty usage - side latches can be clicked shut with or without organizer.
- Large 7" wheels for on site use.

Product #	Height (in)	Width (in)	Overall Length (in)	Weight (lbs)
STST18613	24-5/16	11-5/8	18-1/2	10.71



STANLEY® 2-IN-1 ROLLING WORKSHOP

- 2-in-1 – Bottom bin and top tool box.
- Each unit functions as stand alone.
- Removable tray allows enough space for larger tools to be stored underneath.

Product #	Height (in)	Width (in)	Overall Length (in)	Weight (lbs)
STST18612	24-1/8	11-1/2	18-5/16	9.61



STANLEY® MOBILE WORK CENTER

- Large bin for power tools, level and other large tools.
- Easy mobility with large wheels.
- Slide-down door with easy-shut snap.
- Handle folds down for storage.
- Portable tray for hand tools in top tool storage compartment.

Product #	Capacity (gal)	Height (in)	Width (in)	Overall Length (in)	Weight (lbs)
018800R	13	24-1/8	11-1/16	17-1/2	8.68





STANLEY® 50 GALLON MOBILE TOOL CHEST

- Wide work surface on lid that includes two 2" x 4" saw grooves.
- Pull-out steel handle with soft grip for easy maneuverability.
- Large, nickel-plated metal latches.
- Lock and keys included.
- Wide, heavy-duty rubber-coated wheels.



Product #	Capacity (gal)	Height (in)	Width (in)	Overall Length (in)	Weight (lbs)
037025H	50	23-1/4	22-3/16	37-1/2	31.75

STANLEY® 24 GALLON MOBILE TOOL CHEST

- Suitable for large power tools and accessories.
- Large, heavy-duty metal latches with pad lock eyes.
- Unique tote tray sits conveniently on the pull-out steel handle, increasing the available work space.
- Tote tray includes two deep compartments with covers for smaller tools and accessories.



Product #	Capacity (gal)	Height (in)	Width (in)	Overall Length (in)	Weight (lbs)
029025R	24	19	18-1/2	30	20.25

STANLEY® PRO MOBILE TOOL CHEST WITH REMOVABLE ORGANIZER

- Removable organizer - just remove and all small parts are organized and accessible.
- One half size tray, for easy accessibility to both portable tray and bottom bin.
- V-groove on top lid for onsite sawing needs.
- Wide telescopic steel handle with rubber grip.
- Wide heavy-duty nickel-plated metal latches with padlock eye for locking.
- 7" wheel diameter.



Product #	Capacity (gal)	Height (in)	Width (in)	Overall Length (in)	Weight (lbs)
033026R	12	16-3/4	14-1/8	24	20.68

STANLEY® FATMAX® PROFESSIONAL ORGANIZERS

- High-impact, break-resistant crystal-clear lid.
- Unique lid design keeps storage cups locked in place.
- Removable cups for small parts and accessories.
- Built-in wide handle for easy and stable portability.
- Wide side latches for secure stacking - up to 3 together.
- Front anti-rust metal latches.
- Metal hinges.
- All round water seal for ultimate protection.



Product #	# of Compartments	Capacity (gal)	Height (in)	Width (in)	Overall Length (in)	Weight (lbs)
FMST14820	10	17.60	14	4-1/2	17-1/2	4.85
FMST14920	10	12.11	14	2-7/8	17-1/2	3.89
014461M	14	8.19	4-21/64	16-31/32	19-3/8	5.80

STANLEY® DEEP PROFESSIONAL ORGANIZER - 10 COMPARTMENT

- High-impact, break-resistant, crystal-clear lid.
- Unique lid design keeps storage cups locked in place.
- Removable cup compartments in different sizes.
- Large, deep cups for easy access to small items.
- Extra-wide handle designed for gloved hands.



Product #	# of Compartments	Height (in)	Width (in)	Overall Length (in)	Weight (lbs)
014710R	10	13-1/8	4-1/16	16-5/8	3.68

STANLEY® PROFESSIONAL ORGANIZER - 25 COMPARTMENT

- High-impact, break-resistant crystal-clear lid.
- Unique lid design keeps storage cups locked in place.
- Removable cup compartments in 3 different sizes.
- Extra-wide handle designed for gloved hands.

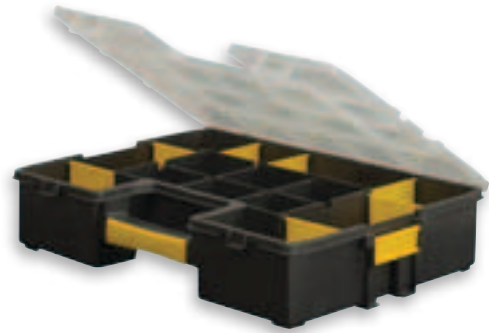


Product #	# of Compartments	Height (in)	Width (in)	Overall Length (in)	Weight (lbs)
014725R	25	2-1/8	13-1/8	16-9/16	2.96



STANLEY® SORTMASTER™ ORGANIZER

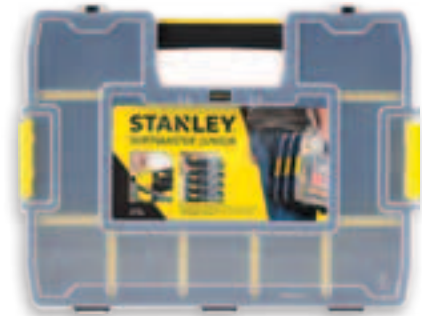
- Side latches lock single organizer and allows secured stacking of multiple organizers and allows transport of 2 units at once.
- Removable dividers provide high customization for small parts and larger hand tools.
- Unique 90 degree angle design allows storage of hammers and angled tools.
- Special lid structure –lid interlocking with dividers to prevents movement of small parts from one compartment to another.



Product #	# of Compartments	Height (in)	Width (in)	Overall Length (in)	Weight (lbs)
STST14027	17	3-7/16	12-63/64	16-15/16	2.57

STANLEY® SORTMASTER™ JUNIOR

- Innovative benefits such as locking latches allow secured stacking and transport of up to 3 at once.
- Movable dividers provide high customization for small parts and larger hand tools; 512 configurations possible.
- Unique 90° angle in the main compartment design allows storage of hammers and angled tools or measuring tapes comfortably with the small parts in the other nearby compartments.
- Special lid structure – upper lid interlocks with dividers to prevent movement of small parts from one compartment to another.



Product #	# of Compartments	Height (in)	Width (in)	Overall Length (in)	Weight (lbs)
STST14022	14	2-5/8	11-3/8	14-5/8	1.82

STANLEY® SORTMASTER™ LIGHT

- Innovation in a basic organizer locking latches and carriage of up to 3 at once.
- Added value of 3 in 1. Single organizer allows secured stacking and transport of up to 3 at once.
- Removable dividers provide high customization for small parts and larger hand tools.
- Special lid structure prevents movement of small parts from one compartment to another.
- Convenient ergonomic carriage of tools with additional latch enables back-to-back stacking.



Product #	# of Compartments	Height (in)	Width (in)	Overall Length (in)	Weight (lbs)
STST14021	10	2-13/16	8-5/8	11-5/8	0.83

STANLEY® 3-IN-1 TOOL ORGANIZER

- Organize hand tools, power tools and accessories.
- Innovative design allows simultaneous access to all 3 storage bins.
- Ability to be used as work station.
- Built-in carrying handle.



Product #	Height (in)	Width (in)	Overall Length (in)	Weight (lbs)
STST17700	12	9	16	5.89

STANLEY® ORGANIZER 166 - 18 COMPARTMENT

- 18 compartments in various sizes.
- Comfortable, bi-material handle.
- Double-latch closure on both sides.
- See-through lid.



Product #	# of Compartments	Height (in)	Width (in)	Overall Length (in)	Weight (lbs)
014002R	18	2-1/2	11-7/16	14-1/4	1.34

*Tools and accessories not included

STANLEY® PORTABLE STORAGE TOTE

- Portable, multipurpose tool storage unit.
- Extra deep – 2 deep compartments with 1.38 gallon volume each.
- Perforations for tools are high enough so that longer screwdrivers can be placed without scratching the surface.
- Reinforced structure through grids design.



Product #	Height (in)	Width (in)	Overall Length (in)	Weight (lbs)
STST41001	7-43/64	13-3/16	19-1/2	2.03

STANLEY® BIN #2 BONUS SET WITH HANGERS

- High-impact, polypropylene construction for durability.
- Set includes 8 small storage bins and 4 wall hangers.
- Hangers allow bins to hang on wall for easy access.
- Bins can be stacked or nested.



Product #	Height (in)	Width (in)	Overall Length (in)	Weight (lbs)
057208R	13-1/2	4-1/8	6-1/2	1.42

*Tools and accessories not included



STANLEY® BIN #3 BONUS SET WITH HANGERS

- High-impact, polypropylene construction for durability.
- Set includes 4 medium-size storage bins with 2 wall hangers.
- Hangers allow for hanging of bins on wall for easy access.
- Bins can be stacked or nested.



Product #	Height (in)	Width (in)	Overall Length (in)	Weight (lbs)
057304R	12-5/8	5-17/20	9-3/8	1.42

*Tools and accessories not included

STANLEY® BINS

- High-impact, polypropylene construction for durability.
- Bins can be stacked or nested.
- Suitable for storing small parts or tools.
- Wide mouth design for easy access to contents.

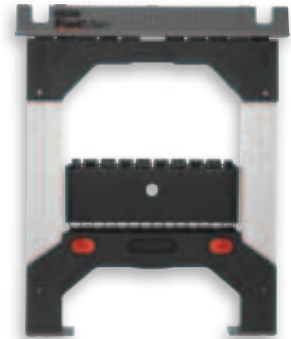


Product #	Height (in)	Width (in)	Overall Length (in)	Weight (lbs)
056400L	6-1/12	7-4/5	12-3/4	0.79
056500L	7-1/8	12	18-1/4	1.41

*Tools and accessories not included

STANLEY® FATMAX® ADJUSTABLE LEG SAWHORSE (SINGLE)

- Each leg adjusts separately, allowing the sawhorse to stand on uneven surfaces.
- Rubber inserts for stability.
- High quality, sturdy polypropylene and aluminum legs.
- Unique slide mechanism, providing for easy, smooth adjustment.



Product #	Weight Capacity	Height (in)	Width (in)	Overall Length (in)	Weight (lbs)
011031S	2500 lbs per pair	32 - 39	2-1/8	27-3/16	10.99

STANLEY® ADJUSTABLE SAWHORSE TWIN PACK

- Sawhorse width and height are adjustable for flexibility.
- Rubber feet and top tray for slip resistance.



Product #	Weight Capacity	Height (in)	Width (in)	Overall Length (in)
STST60626	1000 lbs per pair (800 lbs when width is extended)	31-1/8	2-7/8	28-1/8

STANLEY® FOLD-UP SAWHORSE (SINGLE)

- Galvanized metal and polypropylene construction for lightweight durability.
- Integrated handle or shoulder strap for easy transport – side latches hold two single units together for storage/portability.
- Folding metal legs with locking mechanism for easy setup and safe transportation.
- Rubber leg tips to help prevent movement.
- Designed with working height in mind for comfort.



Product #	Weight Capacity	Height (in)	Width (in)	Overall Length (in)	Weight (lbs)
STST11151	800 lbs per pair	5	4	40	9.34

STANLEY® FOLDING SAWHORSE TWIN PACK

- Comfortable work height.
- Multipurpose side hangers for storage of accessories.
- Strong tray connection helps keep sawhorse from collapsing unexpectedly under heavy load.
- Two built-in V-grooves hold materials such as lumber and pipes in place for cutting.
- Rubber points line top of ruler for load stability.



Product #	Weight Capacity	Height (in)	Width (in)	Overall Length (in)	Weight (lbs)
060864R	1000 lbs per pair	31	2-1/8	26-7/8	12.78

STANLEY® JUNIOR FOLDING SAWHORSE TWIN PACK

- Light weight and easy to transport.
- Integrated V-groove hold materials in place while cutting.
- Bottom tray for storage while in use.



Product #	Weight Capacity	Height (in)	Width (in)	Overall Length (in)	Weight (lbs)
STST60952	800 lbs per pair	32	5	22-1/2	11.02