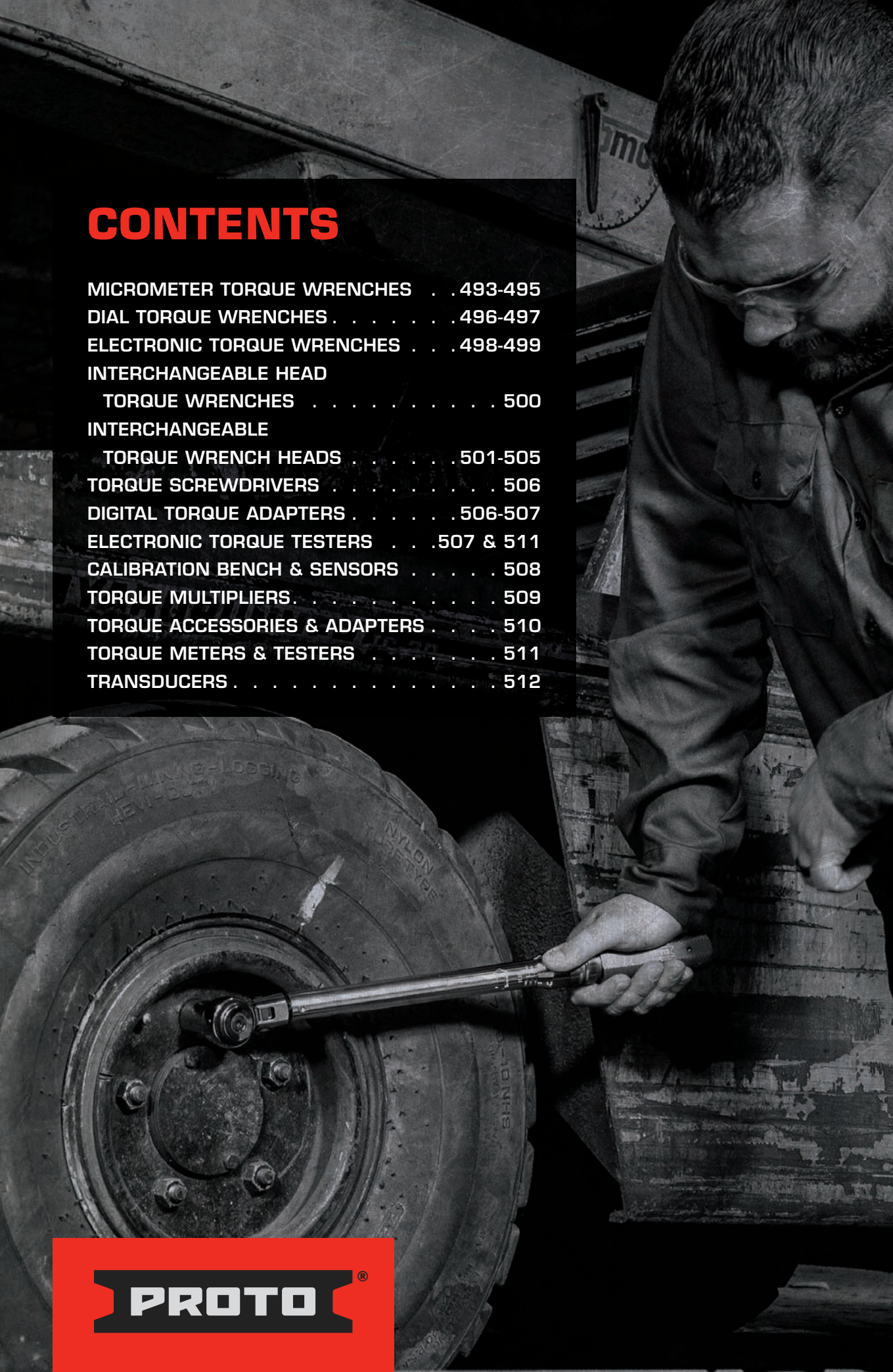


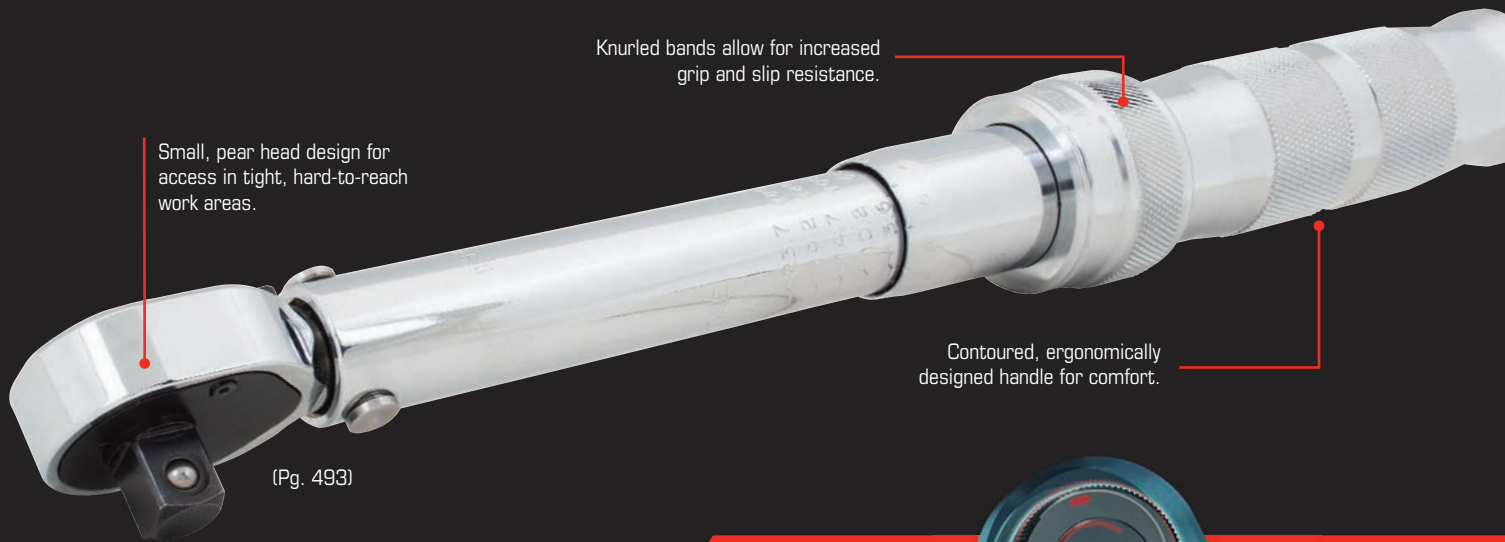
CONTENTS

MICROMETER TORQUE WRENCHES . . .	493-495
DIAL TORQUE WRENCHES	496-497
ELECTRONIC TORQUE WRENCHES . . .	498-499
INTERCHANGEABLE HEAD TORQUE WRENCHES	500
INTERCHANGEABLE TORQUE WRENCH HEADS	501-505
TORQUE SCREWDRIVERS	506
DIGITAL TORQUE ADAPTERS	506-507
ELECTRONIC TORQUE TESTERS . . .	507 & 511
CALIBRATION BENCH & SENSORS	508
TORQUE MULTIPLIERS	509
TORQUE ACCESSORIES & ADAPTERS	510
TORQUE METERS & TESTERS	511
TRANSDUCERS	512



PRECISION TORQUE INNOVATION

Enhance accessibility in tight areas with PROTO® Precision 90 Torque Wrenches. Each is individually crafted from a single piece of solid, high-grade steel. With proper maintenance and regular calibration, our rigorous safety standards ensure you never have to question their accuracy. Plus, we offer precision torque products in a wide range, including micrometer and electronic, as well as torque testing and accessories.



Small, pear head design for access in tight, hard-to-reach work areas.

Knurled bands allow for increased grip and slip resistance.

Contoured, ergonomically designed handle for comfort.

(Pg. 493)

PRECISION 90

90
TOOTH
COUNT = 4°
ARC
SWING



TORQUE BENCH SENSORS

- ▶ Helps ensure manual and electronic torque wrenches comply with ASME B107.300-2010, which requires calibration every 12 months or 5,000 clicks. Customer specification may exceed this.
- ▶ For use with J657 series sensors.
- ▶ 735 Ft. Lbs capacity.
- ▶ Adjustable handle pin to align with calibration marks.
- ▶ Secure frame to maintain dimensional stability.
- ▶ 1200:1 gearbox for accuracy during loading.



(Pg. 508)

*Tablet not included

Visit Torque.ProtoIndustrial.com to download software and user guides.

TORQUE SCREWDRIVERS

- › Accuracy +/- 6% CW to meet ASME spec.
- › Drive hex releases at target torque to help prevent over torque.
- › Female hex output for use with standard 1/4" bits.
- › 1/4" male square drive adapter supplied (J107A and J6108A) for use with sockets.
- › Made in Italy.



(Pg. 506)

ELECTRONIC TORQUE WRENCHES

- › Measuring units: ft-lb, in-lb, kg-cm and Nm.
- › 9 presets available.
- › Stores up to 50 torque values.
- › Accurate to +/- 2% CW and +/- 3% CCW of torque reading at 20%-100%.



J6012EA
(Pg. 498)

Operation modes include Peak or Follow mode.

LCD screen with visual alert lights and audible tone.

36-tooth ratcheting head and 48-tooth ratcheting head

ELECTRONIC TORQUE TESTERS

- › Accurate to +/- 1% CW and +/- 3% CCW digit accuracy.
- › Measuring Units: ft-lbs, in-lbs, and Nm.
- › Operation modes include Peak, Hold and Dial modes.
- › Dimensions: L 5-5/8" x W 6-3/8" x H 3-1/2".
- › Includes blow mold case with AC/DC adapter and calibration certificate.



Digital torque tester with LCD screen and audible beeps.

J6476E
(Pg. 507)

Female square drive.

Male 6 point drive (use with 27mm socket).



J6478E

ACCESSIBILITY + ACCURACY = PRECISION TORQUE

From torque tools to testers, PROTO® offers a complete range of solutions to help deliver accuracy and safety in industrial environments.

BREADTH OF LINE



Micrometer
Torque Wrenches



Electronic
Torque Wrenches



Dial
Torque Wrenches



Interchangeable Heads



Torque Screwdrivers



Torque Adapters



Torque Multipliers



Torque Testers



and more

TORQUE WRENCH CERTIFICATION OPTIONS

All Proto micrometer torque wrenches are certified and calibrated mechanically in the horizontal position with CXCERT versions including documents traceable to N.I.S.T.

Proto® Calibration

	C		CXCERT	
Designation	ASME B107.14-2004		T.O.33K6-4-2193-1	
Standard	ASME B107.14-2004		T.O.33K6-4-2193-1	
Accuracy	CW +/- 4%	CCW +/- 6%	CW +/- 4%	CCW +/- 6%
Calibration Technique	Mechanical Load Horizontal Position		Mechanical Load Horizontal Position	



PRECISION 90 MICROMETER TORQUE WRENCHES

- › Full polish wrenches meet and exceed stringent aerospace specification AS4984A which requires tools to have a thicker nickel-chrome coating for greater corrosion-resistance.
- › Calibrated to +/- 4% clockwise direction and +/- 6% and counter clockwise direction at 20% to 100% of full scale.
- › Calibration is accomplished by mechanical loading of each wrench in a horizontal position and performing at 20%, 60%, and 100% of maximum instrument capacity.
- › Manufactured to meet standard industrial torque applications, general industry, heavy equipment, and maintenance.
- › 90 tooth count head allows for 4 degree arc swing, to help improve accessibility and efficiency.



Product #	Drive Size (in)	Torque Range (in-lbs)	Head Width (in)	Head Depth (in)	Overall Length (in)	Weight (lbs)	Storage Case
J6062HTC	1/4	40-200	1/2	1-1/8	11-3/8	2.60	J6006PBF
J6064HTC	3/8	40-200	1/2	1-1/8	11-3/8	2.70	J6006PBF

SAE AS4984A ASME B107.300-2010

PRECISION 90 MICROMETER TORQUE WRENCHES

PRECISION 90

Contoured, ergonomically designed handle for comfort.

Small, pear head design for access in tight, hard-to-reach work areas.

Knurled bands allow for increased grip and slip resistance.

90 tooth count allows for 4° arc swing, to help improve accessibility and efficiency.

Low profile reversing lever design for quick, one hand operation.

FIXED HEAD MICROMETER TORQUE WRENCHES - IN-LBS

- Full polish wrenches meet and exceed stringent aerospace specification AS4984A which requires tools to have a thicker nickel-chrome coating for greater corrosion-resistance.
- Calibrated to +/- 4% clockwise direction and +/- 6% and counter clockwise direction at 20% to 100% of full scale.
- Calibration is accomplished by mechanical loading of each wrench in a horizontal position and performing at 20%, 60%, and 100% of maximum instrument capacity.
- Manufactured to meet precision/highly accurate applications such as military and aerospace.
- Certification documents are traceable to N.I.S.T. (National Institute of Technology) (CXCERT only).



C Series	CXCERT Series	Drive Size (in)	Torque Range (in-lbs)	Increments (in-lbs)	Head Width (in)	Head Depth (in)	Overall Length (in)	Weight (lbs)	Storage Case
J6061C	J6061CXCERT	1/4	40-200	1	25/32	3/4	11-45/64	2.60	J6006PBF
J6063C	J6063CXCERT	3/8	40-200	1	25/32	7/8	11-45/64	2.60	J6006PBF
J6065C	J6065CXCERT	3/8	200-1000	5	55/64	7/8	15-13/64	3.00	J6006PBF

SAE AS28431B ASME B107.300-2010 

FIXED HEAD MICROMETER TORQUE WRENCHES - FT-LBS

- Full polish wrenches meet and exceed stringent aerospace specification AS4984A which requires tools to have a thicker nickel-chrome coating for greater corrosion-resistance.
- Calibrated to +/- 4% in clockwise direction and +/- 6% counter clockwise direction at 20% to 100% of full scale.
- Manufactured to meet standard industrial torque applications, general industry, heavy equipment, and maintenance.
- Calibration is accomplished by mechanical loading of each wrench in a horizontal position and performing at 20%, 60%, and 100% of maximum instrument capacity.



Product #	Drive Size (in)	Torque Range (ft-lbs)	Increments (ft-lbs)	Head Width (in)	Head Depth (in)	Overall Length (in)	Weight (lbs)	Storage Case
J6005C	3/8	16-80	0.50	55/64	7/8	15-13/54	3.00	J6006PBF
J6013C	1/2	50-250	1	1-1/8	1-7/32	26-23/32	5.90	J6014PBF
J6015C	1/2	30-150	1	1-1/8	1-7/32	21-1/8	5.00	J6014PBF
J6017B	3/4	120-600	2	1-7/8	1-7/8	41-11/64	15.50	J6007PB


SAE AS28431B ASME B107.300-2010 

FIXED HEAD MICROMETER TORQUE WRENCH 200-1000 FT-LBS

- Includes an extension handle.
- Torque wrench is 40" long. Weight and over all length are for torque wrench with the extension handle.
- Packaged in a metal box for easy storage.
- Calibrated $\pm 4\%$ of torque reading clockwise and $\pm 6\%$ counter clockwise at 20% to 100% of full scale.
- Certified wrenches to $\pm 2\%$ one direction are available upon request.



Product #	Drive Size (in)	Torque Range (ft-lbs)	Increments (ft-lbs)	Head Width (in)	Head Depth (in)	Overall Length (in)	Weight (lbs)
J6023	1	200-1000	5	1-7/8	2-1/4	69	24.50


JIS B4650 ISO 6789 T033K6-4-2193-1 AS28431 ASME B107.14M 

FIXED HEAD MICROMETER TORQUE WRENCH 400-2000 FT-LBS

- Includes two extension handles, each 43" long.
- Torque wrench is 34-1/4" long. Weight and overall length are for torque wrench assembled with both extension handles.
- Calibrated $\pm 4\%$ of torque reading clockwise at 20% to 100% of full scale.



Product #	Drive Size (in)	Torque Range (ft-lbs)	Increments (ft-lbs)	Head Width (in)	Head Depth (in)	Overall Length (in)	Weight (lbs)
J6025	1	400-2000	10	3-1/16	4-1/8	107-1/2	53.10

JIS B4650 ISO 6789 T033K6-4-2193-1 AS28431 ASME B107.14M 



RATCHETING HEAD MICROMETER TORQUE WRENCHES - IN-LBS

- ▶ Calibrated to +/- 4% clockwise direction and +/- 6% and counter clockwise direction at 20% to 100% of full scale.
- ▶ Calibration is accomplished by mechanical loading of each wrench in a horizontal position and performing at 20%, 60%, and 100% of maximum instrument capacity.
- ▶ Manufactured to meet precision/highly accurate applications such as military and aerospace.

- ▶ Certification documents are traceable to N.I.S.T. (National Institute of Technology) (CXCERT only).



C Series	CXCERT Series	Drive Size (in)	Torque Range (in-lbs)	Increments (in-lbs)	Head Width (in)	Head Depth (in)	Overall Length (in)	Weight (lbs)	Storage Case	Repair Kit
J6060A	-	1/4	10-50	1	1-1/16	7/8	9-1/2	1.20	J6006PBF	J6062RK
J6062C	J6062CXCERT	1/4	40-200	1	1-1/32	3/4	11-7/8	2.60	J6006PBF	J6062RK
J6064C	J6064CXCERT	3/8	40-200	1	1-1/32	7/8	11-7/8	2.60	J6006PBF	J6064RK
J6066C	J6066CXCERT	3/8	200-1000	5	1-7/16	1-1/64	15-1/2	3.00	J6006PBF	J6006RK
J6068C	-	1/2	360-1800	10	1-7/8	1-13/32	21-1/2	5.00	J6014PBF	J6014RK
J6072C	J6072CXCERT	1/2	600-3000	10	1-7/8	1-13/32	27-1/8	5.90	J6014PBF	J6014RK

ASME B107.14M

RATCHETING HEAD MICROMETER TORQUE WRENCHES - FT-LBS

- ▶ Calibrated to +/- 4% clockwise direction and +/- 6% and counter clockwise direction at 20% to 100% of full scale.
- ▶ Calibration is accomplished by mechanical loading of each wrench in a horizontal position and performing at 20%, 60%, and 100% of maximum instrument capacity.
- ▶ Manufactured to meet precision/highly accurate applications such as military and aerospace.

- ▶ Certification documents are traceable to N.I.S.T. (National Institute of Technology) (CXCERT only).



C Series	CXCERT Series	Drive Size (in)	Torque Range (ft-lbs)	Increments (ft-lbs)	Head Width (in)	Head Depth (in)	Overall Length (in)	Weight (lbs)	Storage Case	Repair Kit
J6006C	J6006CXCERT	3/8	16-80	0.50	1-7/16	1-1/64	15-1/2	3.00	J6006PBF	J6006RK
J6012C	-	3/8	20-100	0.50	1-7/16	1-1/64	17	3.30	J6006PBF	J6006RK
J6008C	J6008CXCERT	1/2	16-80	0.50	1-7/16	1-7/32	15-1/2	3.00	J6006PBF	J6008RK
J6016C	J6016CXCERT	1/2	30-150	1	1-7/8	1-13/32	21-1/2	5.00	J6014PBF	J6014RK
J6014C	J6014CXCERT	1/2	50-250	1	1-7/8	1-13/32	27-1/8	5.90	J6014PBF	J6014RK
J6018AB	J6018CXCERT	3/4	60-300	2	2-5/8	2-1/16	32-23/32	14.00	J6007PB	J6018RK
J6020AB	J6020CXCERT	3/4	120-600	2	2-5/8	2-1/16	41-9/16	15.50	J6007PB	J6018RK
J6022B	-	1	140-700	2	2-5/8	2-5/16	46-27/32	20.50	J6007PB	J6022RK

ASME B107.14M

RATCHETING HEAD MICROMETER TORQUE WRENCHES - NM

- ▶ Calibrated to +/- 4% clockwise direction and +/- 6% counter clockwise direction at 20% to 100% of full scale.
- ▶ Calibration is accomplished by mechanical loading of each wrench in a horizontal position and performing at 20%, 60%, and 100% of maximum instrument capacity.

- ▶ Manufactured to meet standard industrial torque applications, general industry, heavy equipment, and maintenance.



Product #	Drive Size (in)	Torque Range (Nm)	Increments (Nm)	Torque Range (ft-lbs)	Increments (ft-lbs)	Head Width (in)	Head Depth (in)	Overall Length (in)	Weight (lbs)	Storage Case	Repair Kit
J6006MC	3/8	16-80	0.5	-	-	1-7/16	1-1/64	15-1/2	3.00	J6006PBF	J6006RK
J6006NMC*	3/8	16-80	0.5	11.1-62.7	0.5	1-7/16	1-1/64	15-1/2	3.00	J6006PBF	J6006RK
J6016MC	1/2	40-200	1	-	-	1-7/8	1-13/32	21-1/2	5.00	J6014PBF	J6014RK
J6016NMC*	1/2	40-200	1	33.2-151.2	1	1-7/8	1-13/32	21-1/2	5.00	J6014PBF	J6014RK
J6014MC	1/2	70-350	1	-	-	1-7/8	1-13/32	27-1/8	5.90	J6014PBF	J6014RK
J6014NMC*	1/2	70-350	1	55.3-261.8	1	1-7/8	1-13/32	27-1/8	5.90	J6014PBF	J6014RK
J6020NM	3/4	160-800	4	-	-	2-5/8	2-1/16	41-9/16	15.50	J6007PB	J6018RK

*Dual increment indicators

ASME B107.14M

RATCHET HEAD REPAIR KITS - TORQUE WRENCH



- › 1/4" to 1" ratchet wheels made from alloy steel for uncompromising strength and durability.
- › Field repair your torque wrench ratchet head easily with the corresponding repair kit.

Product #	Drive Size (in)	Use With	Weight (lbs)
J6062RK	1/4	J6062C, J6062CXCERT	0.06
J6064RK	3/8	J6064C, J6064CXCERT	0.07
J6006RK	3/8	J6006C, J6006CXCERT, J6006MC, J6006NMC, J6012C, J6066C, J6066CXCERT	0.18
J6014RK	1/2	J6014C, J6014CXCERT, J6014MC, J6014NMC, J6016C, J6016CXCERT, J6016MC, J6016NMC, J6068C, J6072C, J6072CXCERT	0.37
J6008RK	1/2	J6008C, J6008CXCERT	0.19
J6018RK	3/4	J6018AB, J6018CXCERT, J6020AB, J6020CXCERT, J6020NM	1.36
J6022RK	1	J6022B	1.51

DIAL TORQUE WRENCHES - IN-LBS/CM-KG

- › 6-30 in-lbs thru 120-600 in-lbs / 7-35 cm kg thru 140-700 cm kg.
- › Accurate to ± 4% of torque reading in both directions at 20% to 100% of full scale.
- › Industrial all steel or aluminum torque transfer components.
- › High alloy torsion drive design — accuracy not effected by hand position.
- › Dual scale (English/Metric) with clockwise and counterclockwise operation — fewer wrenches needed to complete job.
- › Memory needles are standard on all wrenches except electric light models.
- › Easy-to-read, high contrast scale.
- › Laser marked serial number for traceability.
- › N.I.S.T. (National Institute of Standards and Technology) traceable CW certification supplied with each wrench.



Product #	Certified Series	Drive Size (in)	Torque Range (metric)	Torque Range (in-lbs)	Increments (in-lbs)	Overall Length (in)	Weight (lbs)
J6168F	-	1/4	7-35 cm kg	6-30	0.5	10	1.00
J6169F	J6169FCERT	1/4	18-90 cm kg	15-75	1	10	1.40
J6177F	-	3/8	56-280 cm kg	50-250	5	10	1.30
J6181F	-	3/8	140-700 cm kg	120-600	10	10	2.20

JIS B4650 ISO 6789 ASME B107.14M

DIAL TORQUE WRENCHES - FT-LBS/MKG

- › Accurate to ± 4% of torque reading in both directions at 20% to 100% of full scale.
- › Industrial all steel or aluminum torque transfer components.
- › High alloy torsion drive design — accuracy not effected by hand position.
- › Dual scale (English/Metric) with clockwise and counterclockwise operation — fewer wrenches needed to complete job.
- › Memory needles are standard on all wrenches except electric light models.
- › Easy-to-read, high contrast scale.
- › Laser marked serial number for traceability.
- › N.I.S.T. (National Institute of Standards and Technology) traceable CW certification supplied with each wrench.



Product #	Drive Size (in)	Torque Range (metric)	Torque Range (ft-lbs)	Increments (ft-lbs)	Overall Length (in)	Weight (lbs)
J6113F	3/8	1.4-7 mkg	10-50	1	10-1/4	2.20
J6121F	1/2	5-24 mkg	35-175	5	21-1/2	4.00
J6125F	1/2	7-35 mkg	50-250	5	21-1/2	3.80
J6134F	3/4	-	70-350	10	27-7/8	7.10
J6133F[†]	3/4	16-80 mkg	120-600	10	46-1/2	9.90
J6141F[†]	1	28-140 mkg	200-1000	20	74-1/4	27.00
J6149F^{††}	1	56-280 mkg	400-2000	40	110-3/4	48.00

[†]Includes one removable extension handle

^{††}Includes five removable extension handles with electric LED and buzzer

JIS B4650 ISO 6789 ASME B107.14M



DIAL TORQUE WRENCHES - NM/IN-LBS, FT-LBS

- › 2-10 Nm thru 50-250 Nm / 18-90 in-lbs thru 35-175 ft-lbs
- › Accurate to ± 4% of torque reading in both directions at 20% to 100% of full scale.
- › Industrial all steel or aluminum torque transfer components.
- › High alloy torsion drive design — accuracy not effected by hand position.
- › Dual scale (Metric/English) with clockwise and counterclockwise operation — fewer wrenches needed to complete job.
- › Memory needles are standard on all wrenches except electric light models.
- › Easy-to-read, high contrast scale.
- › Laser marked serial number for traceability.
- › N.I.S.T. (National Institute of Standards and Technology) traceable CW certification supplied with each wrench.

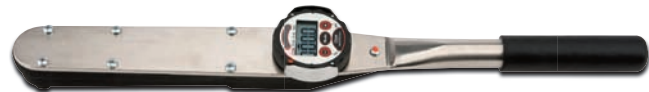


Product #	Certified Series	Drive Size (in)	Torque Range (ft-lbs)	Torque Range (in-lbs)	Torque Range (Nm)	Increments (Nm)	Overall Length (in)	Weight (lbs)
J6169NMF	—	1/4	—	18-90	2-10	0.2	10	1.30
J6177NMF	J6177NMF CERT	3/8	—	50-250	6-30	0.5	10	1.50
J6113NMF	—	3/8	10-50	—	14-70	2	14-7/8	2.10
J6121NMF	—	1/2	35-175	—	50-250	5	21-1/2	4.00

ASME B107.14M

DIAL ELECTRONIC TORQUE WRENCHES - IN-LBS, FT-LBS

- › Extended operation range in Ft-lb, In-lb and Nm units.
- › Precision Accuracy: + / - 1% in BOTH directions.
- › Accuracy valid from 10% to 100% of full scale.
- › Large easy to read digits.
- › Patented rotary bezel. LCD and key pad rotate both ways, up to 359 degrees for easy viewing.
- › Torque target zone adjustable 1% to 10% indicates when the desired torque limit is approaching.
- › Yellow light indicates the low end of the zone
- › Green light and buzzer sounds when the target is reached
- › Red Light with intermittent buzzer indicates over-torqued
- › One button target torque setting.
- › Ergonomically designed for user comfort.
- › Operates on standard 9 volt battery.
- › Torsion drive strain gauge technology improves accuracy.
- › Users can pull on the handle anywhere and still maintain accuracy.
- › Built on durable chrome body (not painted) with nylon-6 rotary bezel.
- › Rotary dial is shrouded with metal walls to protect display.
- › Peak, hold and track modes standard.
- › Fast sampling rate helps maintain high accuracy during torque applications.
- › Easy to use by production line or quality control inspector.
- › Meets or exceeds ASME B107.28



Product #	Drive Size (in)	Torque Range (ft-lbs)	Increments (ft-lbs)	Torque Range (in-lbs)	Increments (in-lbs)	Torque Range (nm)	Increments (nm)	Width (in)	Height (in)	Overall Length (in)	Weight (lbs)
J6339	1/4	0.63-6.25	0.01	7.5-75	0.01	0.84-8.47	0.01	3	2-1/2	11	1.40
J6342	1/4	0.83-8.33	0.01	10-100	0.10	1.11-11.13	0.01	3	2-1/2	11	1.40
J6345	3/8	2.1-21	0.01	25-250	0.10	2.8-28.2	0.01	3	2-1/2	11	1.40
J6345A	3/8	5-50	0.01	60-600	0.10	6.78-67.8	0.1	3	2-1/2	11	1.40
J6345B	1/2	10-100	0.01	120-1200	1.00	13.3-133.5	0.1	3	4	22	2.80
J6346	1/2	25-250	0.10	300-3000	1.00	33.8-338	0.1	3	4	22	2.80
J6347	3/4	60-600	0.10	720-7200	1.00	81-813	0.1	3	4	22	2.80
J6349	1	100-1000	—	—	—	140-1400	—	4	5	77	20.00
J6351	1	200-2000	—	—	—	271-2700	—	4	5	125	46.00

ASME B107.28

ELECTRONIC SMART TORQUE WRENCHES - FT-LBS

- ▶ Connected Bluetooth Torque Wrench allows for fast, easy and accurate torque setting.
- ▶ App control for advanced features to set torque target, help reduce errors and record measurements for audit.
- ▶ Torque history data transfer through mobile application.
- ▶ Digital Torque Wrench with 2% accuracy CW/CCW and Angle measurement +/- 1 degree.
- ▶ Calibration status reporting to ASME or user defined schedule.
- ▶ Includes protective Blow Mold Case, fast 2A charger, micro USB cable, charging dock, manual and calibration certificate.



Product #	Drive Size (in)	Torque Range (ft-lbs)	Increments (ft-lbs)	Torque Range (in-lbs)	Increments (in-lbs)	Torque Range (NM)	Overall Length (in)	Weight (lbs)
J6110BT	1/4	1-22	0.10	12-264	0.10	1.5-30	17-1/8	2.32
J6112BT	3/8	5-100	0.10	60-1200	0.10	6.70-135	17-1/5	2.75
J6114BT	1/2	25-250	0.10	300-3000	0.10	17-340	32-7/25	3.94

SMART TORQUE WRENCHES

Haptic feedback, positive mechanical click and LED lights for precise control of applied torque.

OLED display for clear indication of status vs. target.

Square profiled rubber bumper to help prevent roll-away and reduce drop.

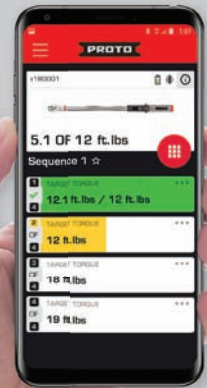
Charging dock

Micro USB cable



Included software allows for:

- ▶ Fast setting of torque or angle.
- ▶ Single or multi-pass sequences creation.
- ▶ Unit conversion.
- ▶ View of real-time results via app software.
- ▶ Data transfer for auditing.



For more information, please contact your local sales representative.

ELECTRONIC TORQUE WRENCHES - FT-LBS

- ▶ LCD screen with visual alert lights and audible tone.
- ▶ Measuring units: Nm, ft-lb, in-lb, and kg-cm.
- ▶ Accurate to +/-2% CW and +/- 3% CCW of torque reading at 20% to 100%.
- ▶ Operation modes include Peak or Follow mode.
- ▶ 9 presets available.
- ▶ 36-tooth ratcheting head.
- ▶ Data memory size of 50.
- ▶ Includes blow mold case, 2x AA batteries and calibration certificate.



Product #	Drive Size (in)	Torque Range (ft-lbs)	Increments (ft-lbs)	Torque Range (in-lbs)	Increments (in-lbs)	Width (in)	Height (in)	Overall Length (in)	Weight (lbs)	Battery Type
J6012E	3/8	5-99	0.10	60-1188	1	1-41/34	1-41/64	16-19/64	4.30	AA
J6014E	1/2	12.5-250	0.10	150-3000	1	1-41/34	1-41/64	25-19/32	6.40	AA

ASME B107.28



ELECTRONIC FLEX HEAD TORQUE WRENCHES - FT-LBS

- › LCD screen with visual alert lights and audible tone.
- › Measuring units: Nm, ft-lb, in-lb, and kg-cm.
- › Accurate to +/-2% CW and +/- 3% CCW of torque reading at 20% to 100%.
- › Operation modes include Peak or Follow mode.
- › 9 presets available.
- › 36-tooth ratcheting flex head.
- › Data memory size of 50.
- › Includes blow mold case, 2x AA batteries and calibration certificate.



Product #	Drive Size (in)	Torque Range (ft-lbs)	Increments (ft-lbs)	Torque Range (in-lbs)	Increments (in-lbs)	Overall Length (in)	Weight (lbs)	Battery Type
J6061EFX	1/4	1.1-22	0.01	12-264	0.10	15-19/32	4.00	AA
J6012EFX	3/8	5-99	0.10	60-1188	1	16-45/64	4.10	AA
J6014EFX	1/2	12.5-250	0.10	150-3000	1	25-51/64	6.40	AA

ASME B107.28

ELECTRONIC ANGLE TORQUE WRENCHES - FT-LBS

- › LCD screen with visual alert lights and audible tone.
- › Measuring units: Nm, ft-lb, in-lb, and kg-cm.
- › Accurate to +/-2% CW and +/- 3% CCW of torque reading at 20% to 100%.
- › Angle Accuracy: +/- 2° (rotating 90° at speed of 30° per second).
- › Operation modes include Peak or Follow mode.
- › 9 presets available.
- › 36-tooth ratcheting head (J6012EA) and 48-tooth ratcheting head (J6020EA).
- › Data memory size of 50.
- › Includes blow mold case, 2x AA batteries and calibration certificate.



Product #	Drive Size (in)	Torque Range (ft-lbs)	Increments (ft-lbs)	Torque Range (in-lbs)	Increments (in-lbs)	Overall Length (in)	Weight (lbs)	Battery Type
J6012EA	3/8	5-99	0.1	60-1188	1	48-1/32	4.10	AA
J6020EA	3/4	30-600	0.1	360-7200	1	16-47/64	12.10	AA

ASME B107.28

ELECTRONIC FIXED RATCHETING HEAD TORQUE WRENCHES

- › Accuracy of +/- 2% of indicated value in both clockwise and counter clockwise directions.
- › Broad accuracy range extends from 10% of Full Scale to 100% of Full Scale to help reduce the number of torque wrenches required.
- › Ninety-nine "on-board" memory storage locations help improve efficiency when taking multiple torque readings.
- › Three units of measure are available (Ft-lb, In-lb, and Nm).
- › Three operating modes: Track Mode, Peak Hold and Auto Clear.
- › Fast sampling rate helps maintain high accuracy during torque applications.
- › Torque wrench head rotates to allow for easy viewing of LCD display.
- › Easy to read LCD Display with large digits.
- › 3-way Red/Green/Yellow lights.
 - › Yellow light appears at the low end of the zone.
 - › Green light appears and buzzer sounds when the target is reached.
 - › Red light appears with intermittent buzzer when it is over torqued.
- › An audible buzzer helps identify when desired torque target zones are approaching and met.
- › Target torque zone is adjustable from 1% to 10% of targeted torque value.
- › Fixed ratcheting head features a robust 24 tooth design with 15° arc swing, alloy steel drive gear for strength and durability, low profile for easy access and a reversing lever design for quick, one handed operation.
- › Ergonomically designed, comfortable cushion grip.
- › Meets or exceeds ASME B107.28
- › N.I.S.T. traceable certificate included.



Product #	Size (in)	Drive Size (in)	Torque Range (ft-lbs)	Torque Range (in-lbs)	Increments (ft-lbs)	Increments (in-lbs)	Width (in)	Height (in)	Overall Length (in)	Weight (lbs)	Battery Type	Repair Kit
JH4-250RB	27/64	1/4	2.1-20.8	25-250	0.01	0.10	1-3/4	2	20-1/2	2.50	4 AA included	JH4-250RBRK
JH5-100FRB	9/16	3/8	10-100	120-1200	0.10	1.00	1-3/4	2	20-1/2	2.70	4 AA included	JH5-100FRBRK
JH7-250FRB	47/64	1/2	25-250	300-3000	0.10	1.00	1-3/4	2	27-3/4	3.30	4 AA included	JH7-250FRBRK

ASME B107.28

ELECTRONIC TORQUE WRENCH SOFTWARE & USB CONNECTION INTERFACE

- › Proto® Software allows for full two-way communication between the torque wrench or tester and a laptop or desktop computer.
- › Add-on the software and plug in the cable for full computer interface.
- › All data captured by the torque wrench can be downloaded directly into a spreadsheet: either all at once from on-board memory or one reading at a time.
- › Control all settings on the torque wrench from the wrench or computer.
- › Software includes CD and connection cable which interfaces with computer's USB connection.
- › Compatible with Windows XP.



Product #	Width (in)	Height (in)	Overall Length (in)	Use With	Weight (lbs)
JH6000SW	5	1-3/4	5	JH4-250, JH4-250R, JH5-100F, JH5-100FR, JH7-250F, JH7-250FR, J6470-C, J6472-C, J6474-C, J6476-C, J6478-C	0.60



ELECTRONIC INTERCHANGEABLE HEAD TORQUE WRENCH ASSEMBLIES

- › Full interface with Proto® Interchangeable Head Attachments.
- › Accuracy of +/- 2% of indicated value in both clockwise and counter clockwise directions.
- › Broad accuracy range extends from 10% to 100% of Full Scale to help reduce the number of torque wrenches required.
- › Ninety-nine "on-board" memory storage locations help improve efficiency when taking multiple torque readings.
- › Three units of measure are available (Ft-lb, In-lb, and Nm).
- › Three operating modes: Track Mode, Peak Hold and Auto Clear.
- › Fast sampling rate helps maintain high accuracy during torque applications.
- › Torque wrench head rotates to allow for easy viewing of LCD display.
- › Easy to read LCD Display with large digits.
- › 3-way Red/Green/Yellow lights.
- › Yellow light appears at the low end of the zone.
- › Green light appears and buzzer sounds when the target is reached.
- › Red light appears with intermittent buzzer when it is over torqued.
- › Audible buzzer helps identify when desired torque target zones are approaching and met.
- › Target torque zone is adjustable from 1% to 10% of targeted torque value.
- › Meets or exceeds ASME B107.28



Product #	Tang Size	Torque Range (ft-lbs)	Torque Range (in-lbs)	Increments (ft-lbs)	Increments (in-lbs)	Width (in)	Height (in)	Overall Length (in)	Weight (lbs)
JH4-250	H4	2.1-20.8	25-250	0.01	0.10	1-3/4	2	17-1/4	2.20
JH5-100F	H5	10-100	120-1200	0.10	1.00	1-3/4	2	17-1/4	2.40
JH7-250F	H7	25-250	300-3000	0.10	1.00	1-3/4	2	23	3.00

ASME B107.28

MICROMETER INTERCHANGEABLE HEAD TORQUE WRENCH ASSEMBLIES

- › Full interface with Proto® Interchangeable Head Attachments.
- › Accuracy of +/-4% CW and +/-6% CCW.
- › Two sizes available.
- › Meets or exceeds ASME B107.14M specification.



Product #	Tang Size	Torque Range (ft-lbs)	Increments (ft-lbs)	Width (in)	Height (in)	Overall Length (in)	Weight (lbs)
JH5-6006C	H5	16-80	0.50	1-1/4	1-1/4	15	2.50
JH7-6014C	H7	50-250	1.00	1-1/2	1-1/2	26	4.70

ASME B107.14M

PRE-SET INTERCHANGEABLE HEAD TORQUE WRENCH ASSEMBLIES

- › Full interface with Proto® Interchangeable Head Attachments.
- › Accuracy of +/-4% CW and +/-6% CCW.
- › Pre-set for fixed and repeatable torque applications.
- › Click-type operation for audible click.
- › Soft, comfortable grip.



Product #	Tang Size	Torque Range (ft-lbs)	Torque Range (in-lbs)	Width (in)	Height (in)	Overall Length (in)	Weight (lbs)
JH4-150PS	H4	-	50-150	1-1/2	1-1/2	6	0.70
JH4-50FPS	H4	10-50	-	1-1/2	1-1/2	11	1.30
JH5-150FPS	H5	45-150	-	1-1/2	1-1/2	19-1/4	2.25
JH5-200FPS	H5	45-200	-	1-1/2	1-1/2	23-1/4	2.30

ASME B107.14M



1/4" DRIVE RATCHET TORQUE WRENCH HEAD - H4 TANG

- › Fixed ratcheting head with a robust 24 tooth design with 15° arc swing.
- › Alloy steel drive gear for strength and durability.
- › Low profile for easy access.
- › Reversing lever design for quick, one handed operation.



Product #	Drive Size (in)	Width (in)	Height (in)	Overall Length (in)	Weight (lbs)
JH4-14R	1/4	1-1/16	23/32	3-1/4	0.20

Use With: JH4-250, JH4-150PS

OPEN END TORQUE WRENCH HEADS - H4 TANG

- › Open end is angled to 15° to help keep shank clear of obstructions helping to improve access.



Product #	INCH	MM	Width (in)	Height (in)	Overall Length (in)	Weight (lbs)
JH4-12	3/8	–	27/32	7/16	3-1/16	0.08
JH4-14	7/16	–	15/16	7/16	3-1/32	0.09
JH4-16	1/2	–	1-1/16	7/16	3-3/32	0.11
JH4-18	9/16	–	1-7/32	7/16	3-5/32	0.13
JH4-10M	–	10	27/32	7/16	3-1/16	0.08
JH4-11M	–	11	15/16	7/16	3-1/32	0.09
JH4-12M	–	12	1-1/32	7/16	3-1/16	0.10
JH4-13M	–	13	1-1/16	7/16	3-3/32	0.11
JH4-14M	–	14	1-7/32	7/16	3-5/32	0.13

Use With: JH4-250, JH4-150PS, JH4-50FPS

BOX END TORQUE WRENCH HEADS - H4 TANG

- › The Proto® TorquePlus™ Design, a high performance drive configuration which allows for quick and easy wrench engagement with the fastener flats, not the corners.
- › 12 point box end allows for fine indexing, helping to improve speed and access.
- › Fits 4, 6 and 12 point fasteners.
- › Indexed to 7.5° to help keep shank clear of obstructions by allowing the user to flip the wrench over to continue turning the fastener.
- › Countersunk on both sides to allow for easy application to the fastener.



Product #	INCH	MM	Width (in)	Height (in)	Overall Length (in)	Weight (lbs)
JH4-12B	3/8	–	19/32	7/16	3-1/32	0.08
JH4-14B	7/16	–	21/32	7/16	3-1/16	0.08
JH4-16B	1/2	–	25/32	7/16	3-1/8	0.11
JH4-18B	9/16	–	27/32	7/16	3-5/32	0.12
JH4-10MB	–	10	19/32	7/16	3-1/32	0.07
JH4-11MB	–	11	21/32	7/16	3-1/16	0.08
JH4-12MB	–	12	23/32	7/16	3-3/32	0.09
JH4-13MB	–	13	25/32	7/16	3-1/8	0.10
JH4-14MB	–	14	27/32	7/16	3-5/32	0.12

Use With: JH4-250, JH4-150PS, JH4-50FPS

3/8" DRIVE RATCHET TORQUE WRENCH HEAD - H5 TANG

- › Fixed ratcheting head with a robust 24 tooth design with 15° arc swing.
- › Alloy steel drive gear for strength and durability.
- › Low profile for easy access.
- › Reversing lever design for quick, one handed operation.



Product #	Drive Size (in)	Width (in)	Height (in)	Overall Length (in)	Weight (lbs)
JH5-38R	3/8	1-7/16	1	4-3/32	0.47

Use With: JH5-100F, JH5-6006C, JH5-150FPS, JH5-200FPS

OPEN END TORQUE WRENCH HEADS - H5 TANG

- › Open end is angled to 15° to help keep shank clear of obstructions helping to improve access.



Product #	INCH	MM	Width (in)	Height (in)	Overall Length (in)	Weight (lbs)
JH5-14	7/16	–	15/16	5/8	3-21/32	0.14
JH5-16	1/2	–	1-1/16	5/8	3-3/4	0.16
JH5-18	9/16	–	1-7/32	5/8	3-13/16	0.18
JH5-20	5/8	–	1-5/16	5/8	3-27/32	0.21
JH5-22	11/16	–	1-7/16	5/8	3-7/8	0.23
JH5-24	3/4	–	1-19/32	5/8	3-15/16	0.27
JH5-26	13/16	–	1-23/32	5/8	3-31/32	0.31
JH5-28	7/8	–	1-27/32	5/8	4	0.34
JH5-11M	–	11	15/16	5/8	3-21/32	0.14
JH5-12M	–	12	1-1/32	5/8	3-23/32	0.15
JH5-13M	–	13	1-1/16	5/8	3-3/4	0.16
JH5-14M	–	14	1-7/32	5/8	3-13/16	0.18
JH5-15M	–	15	1-1/4	5/8	3-13/16	0.19
JH5-16M	–	16	1-5/16	5/8	3-27/32	0.21
JH5-17M	–	17	1-7/16	5/8	3-7/8	0.23
JH5-18M	–	18	1-1/2	5/8	3-29/32	0.25
JH5-19M	–	19	1-19/32	5/8	3-15/16	0.27
JH5-20M	–	20	1-5/8	5/8	3-15/16	0.28
JH5-21M	–	21	1-23/32	5/8	3-31/32	0.31
JH5-22M	–	22	1-27/32	5/8	4	0.34
JH5-23M	–	23	1-29/32	5/8	4-1/16	0.38

Use With: JH5-100F, JH5-6006C, JH5-150FPS, JH5-200FPS



BOX END TORQUE WRENCH HEADS - H5 TANG

- › The Proto® TorquePlus™ Design, a high performance drive configuration which allows for quick and easy wrench engagement with the fastener flats, not the corners.
- › 12 point box end allows for fine indexing, helping to improve speed and access.
- › Fits 4, 6 and 12 point fasteners.
- › Indexed to 7.5° to help keep shank clear of obstructions by allowing the user to flip the wrench over to continue turning the fastener.
- › Countersunk on both sides to allow for easy application to the fastener.



INTERCHANGEABLE TORQUE WRENCH HEADS

Product #	INCH	MM	Width (in)	Height (in)	Overall Length (in)	Weight (lbs)
JH5-14B	7/16	–	21/32	5/8	3-23/32	0.13
JH5-16B	1/2	–	25/32	5/8	3-3/4	0.16
JH5-18B	9/16	–	27/32	5/8	3-25/32	0.17
JH5-20B	5/8	–	15/16	5/8	3-27/32	0.20
JH5-22B	11/16	–	1	5/8	3-7/8	0.22
JH5-24B	3/4	–	1-1/8	5/8	3-15/16	0.25
JH5-26B	13/16	–	1-3/16	5/8	3-31/32	0.28
JH5-28B	7/8	–	1-9/32	5/8	4	0.31
JH5-11MB	–	11	21/32	5/8	3-23/32	0.13
JH5-12MB	–	12	23/32	5/8	3-23/32	0.14
JH5-13MB	–	13	25/32	5/8	3-3/4	0.16
JH5-14MB	–	14	27/32	5/8	3-25/32	0.17
JH5-15MB	–	15	7/8	5/8	3-13/16	0.18
JH5-16MB	–	16	15/16	5/8	3-27/32	0.20
JH5-17MB	–	17	1	5/8	3-7/8	0.22
JH5-18MB	–	18	1-1/16	5/8	3-29/32	0.23
JH5-19MB	–	19	1-1/8	5/8	3-15/16	0.25
JH5-20MB	–	20	1-5/32	5/8	3-31/32	0.27
JH5-21MB	–	21	1-3/16	5/8	3-31/32	0.28
JH5-22MB	–	22	1-9/32	5/8	4	0.31
JH5-23MB	–	23	1-11/32	5/8	4-1/16	0.36

Use With: JH5-100F, JH5-6006C, JH5-150FPS, JH5-200FPS

1/2" DRIVE RATCHET TORQUE WRENCH HEAD - H7 TANG

- › Fixed ratcheting head with a robust 24 tooth design with 15° arc swing.
- › Alloy steel drive gear for strength and durability.
- › Low profile for easy access.
- › Reversing lever design for quick, one handed operation.



Product #	Drive Size (in)	Width (in)	Height (in)	Overall Length (in)	Weight (lbs)
JH7-12R	1/2	1-27/32	1-13/32	5-7/8	1.08

Use With: JH7-250F, JH7-6014C

OPEN END TORQUE WRENCH HEADS - H7 TANG

- Open end is angled to 15° to help keep shank clear of obstructions helping to improve access.



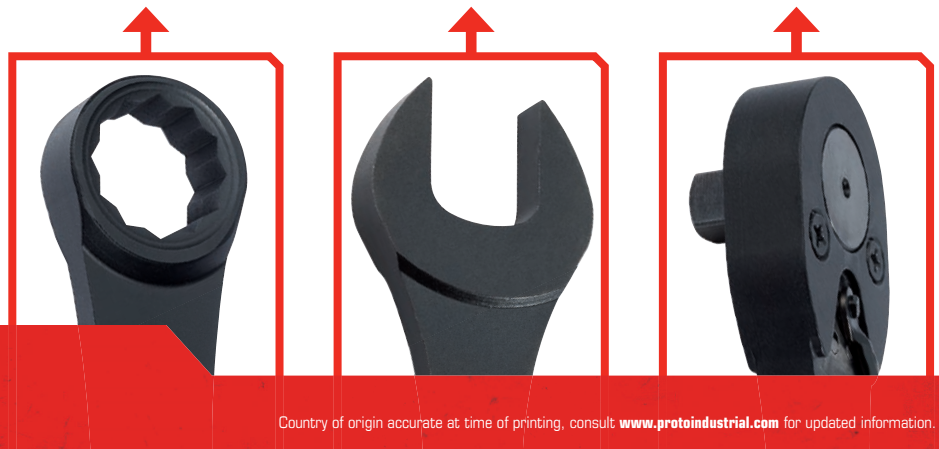
Product #	INCH	MM	Width (in)	Height (in)	Overall Length (in)	Weight (lbs)
JH7-18	9/16	–	1-7/32	13/16	5-3/8	0.32
JH7-20	5/8	–	1-5/16	13/16	5-13/32	0.35
JH7-22	11/16	–	1-7/16	13/16	5-7/16	0.38
JH7-24	3/4	–	1-19/32	13/16	5-1/2	0.42
JH7-26	13/16	–	1-23/32	13/16	5-17/32	0.48
JH7-28	7/8	–	1-27/32	13/16	5-9/16	0.51
JH7-30	15/16	–	1-31/32	13/16	5-5/8	0.57
JH7-32	1	–	2-3/32	13/16	5-21/32	0.64
JH7-34	1-1/16	–	2-7/32	13/16	5-23/32	0.71
JH7-36	1-1/8	–	2-11/32	13/16	5-25/32	0.79
JH7-38	1-3/16	–	2-7/16	13/16	5-27/32	0.84
JH7-40	1-1/4	–	2-9/16	13/16	5-27/32	0.93
JH7-42	1-5/16	–	2-21/32	13/16	5-29/32	0.97
JH7-44	1-3/8	–	2-13/16	13/16	5-15/16	1.08
JH7-15M	–	15	1-1/4	13/16	5-3/8	0.33
JH7-16M	–	16	1-5/16	13/16	5-13/32	0.35
JH7-17M	–	17	1-7/16	13/16	5-7/16	0.38
JH7-18M	–	18	1-1/2	13/16	5-15/32	0.40
JH7-19M	–	19	1-19/32	13/16	5-1/2	0.42
JH7-20M	–	20	1-5/8	13/16	5-1/2	0.45
JH7-21M	–	21	1-23/32	13/16	5-17/32	0.48
JH7-22M	–	22	1-27/32	13/16	5-9/16	0.51
JH7-23M	–	23	1-29/32	13/16	5-5/8	0.56
JH7-24M	–	24	1-31/32	13/16	5-5/8	0.57
JH7-25M	–	25	2-3/32	13/16	5-21/32	0.64
JH7-26M	–	26	2-5/32	13/16	5-21/32	0.65
JH7-27M	–	27	2-7/32	13/16	5-23/32	0.71
JH7-28M	–	28	2-7/32	13/16	5-25/32	0.70
JH7-29M	–	29	2-11/32	13/16	5-25/32	0.79
JH7-30M	–	30	2-7/16	13/16	5-27/32	0.84
JH7-32M	–	32	2-9/16	13/16	5-27/32	0.93

Use With: JH7-250F, JH7-6014C



INTERCHANGEABLE HEADS

In the Proto® IHTW System, different heads can be used on the same assembly while maintaining calibration. This assembly can do the same job as three fixed head tools.





BOX END TORQUE WRENCH HEADS - H7 TANG

- › The Proto® TorquePlus™ Design, a high performance drive configuration which allows for quick and easy wrench engagement with the fastener flats, not the corners.
- › 12 point box end allows for fine indexing, helping to improve speed and access.
- › Fits 4, 6 and 12 point fasteners.
- › Indexed to 7.5° to help keep shank clear of obstructions by allowing the user to flip the wrench over to continue turning the fastener.
- › Countersunk on both sides to allow for easy application to the fastener.



INTERCHANGEABLE TORQUE WRENCH HEADS

Product #	INCH	MM	Width (in)	Height (in)	Overall Length (in)	Weight (lbs)
JH7-18B	9/16	–	27/32	13/16	5-11/32	0.31
JH7-20B	5/8	–	15/16	13/16	5-13/32	0.34
JH7-22B	11/16	–	1	13/16	5-7/16	0.36
JH7-24B	3/4	–	1-1/8	13/16	5-1/2	0.40
JH7-26B	13/16	–	1-3/16	13/16	5-17/32	0.45
JH7-28B	7/8	–	1-9/32	13/16	5-9/16	0.48
JH7-30B	15/16	–	1-3/8	13/16	5-5/8	0.55
JH7-32B	1	–	1-15/32	13/16	5-11/16	0.60
JH7-34B	1-1/16	–	1-17/32	13/16	5-23/32	0.66
JH7-36B	1-1/8	–	1-5/8	13/16	5-3/4	0.71
JH7-38B	1-3/16	–	1-3/4	13/16	5-13/16	0.80
JH7-40B	1-1/4	–	1-13/16	13/16	5-27/32	0.82
JH7-42B	1-5/16	–	1-29/32	13/16	5-29/32	0.91
JH7-44B	1-3/8	–	1-31/32	13/16	5-15/16	0.98
JH7-15MB	–	15	7/8	13/16	5-3/8	0.32
JH7-16MB	–	16	15/16	13/16	5-13/32	0.34
JH7-17MB	–	17	1	13/16	5-7/16	0.37
JH7-18MB	–	18	1-1/16	13/16	5-15/32	0.39
JH7-19MB	–	19	1-1/8	13/16	5-1/2	0.40
JH7-20MB	–	20	1-5/32	13/16	5-17/32	0.43
JH7-21MB	–	21	1-3/16	13/16	5-17/32	0.44
JH7-22MB	–	22	1-9/32	13/16	5-9/16	0.48
JH7-23MB	–	23	1-11/32	13/16	5-5/8	0.54
JH7-24MB	–	24	1-3/8	13/16	5-5/8	0.55
JH7-25MB	–	25	1-15/32	13/16	5-11/16	0.61
JH7-26MB	–	26	1-1/2	13/16	5-11/16	0.60
JH7-27MB	–	27	1-17/32	13/16	5-23/32	0.66
JH7-28MB	–	28	1-19/32	13/16	5-23/32	0.66
JH7-29MB	–	29	1-5/8	13/16	5-3/4	0.71
JH7-30MB	–	30	1-3/4	13/16	5-13/16	0.81
JH7-32MB	–	32	1-13/16	13/16	5-27/32	0.82

Use With: JH7-250F, JH7-6014C



TANG SIZES

Match the tang size of the head with the tang size of the wrench.

Tang sizes are not interchangeable.



TORQUE SCREWDRIVERS

- › Calibrated to ± 6% of torque reading, clockwise at 20% to 100% of full scale.
- › Slipping clutch release to prevent overtorque.
- › 1/4" Square to 1/4" Hex Adapter included for use with insert bits (applies to J6107A and J6108A only).
- › Hex key adjustment with supplied tool (J6102A, J6107A, J6108A only).
- › Lock ring (J6104A, J6104ACERT, J6106A, J6106ACERT only).
- › Laser marked easy-to-read scale.
- › N.I.S.T. (National Institute of Standards and Technology) traceable certification supplied with J6104ACERT and J6106ACERT.



J6104ACERT



J6102A



J6108A

Product #	Certified Series	Drive Size (in)	Torque Range (in-lbs)	Increments (in-lbs)	Torque Range (in-oz)	Increments (in-oz)	Width (in)	Height (in)	Overall Length (in)	Weight (lbs)	Country of Origin
J6104A	J6104ACERT	1/4	–	–	20-100	2	1-1/4	1-1/4	6-1/2	1.00	
J6106A	J6106ACERT	1/4	7-36	1	–	–	1-1/4	1-1/4	6-1/2	1.00	
J6102A		1/4			20-100	0.50	15/16	15/16	5-3/8	4.30	Italy
J6107A		1/4	4-22	1			1-9/16	1-9/16	5-7/8	10.20	Italy
J6108A		1/4	16-88	4			1-3/8	1-3/8	6-5/8	14.40	Italy

ASME B107.14M

DIGITAL ANGLE ADAPTER

- › Digital angle value readout.
- › Ultra simple use: autotest and reset upon powering on.
- › Adapter magnetized so it attaches to all types of ratchets.
- › +/-2° accuracy (rotating 90° at speed of 30° / sec).
- › +/-2% clockwise and counter clockwise for torque accuracy.
- › LEDs for easy viewing of results and audible beep when desired level is reached.
- › Buzzer and LED indicator for the 9 pre-settable target torques.
- › 50 data memory for recall and joint torque auditing.
- › Auto Sleep after about 2 minutes idle.
- › Both AAA and rechargeable batteries are compatible.



Product #	Overall Length (in)	Weight (lbs)	Battery Type	Storage Case
J6300TWA	2-9/32	0.50	2 AAA included	J6300PB

ASME B107.28



DIGITAL TORQUE & ANGLE ADAPTERS

- › Torque and angle tightening with one tool: productivity improvement, digital display minimizes reading errors, and delivers high precision.
- › +/-2° (rotating 90° at speed of 30° / sec) for angle accuracy.
- › +/-3% clockwise or +/-4% counter clockwise for torque accuracy.
- › LEDs for easy viewing of results and audible beep when desired level is reached.
- › Buzzer and LED indicator for the 9 pre-settable target torques or angles.
- › Five Units Selectable (N.m, Ft-lb, In-lb, kg-cm, degree).
- › 50 data memory for recall and joint torque-angle auditing.
- › Auto Sleep after about 2 minutes idle.
- › Both AAA and rechargeable batteries are compatible.



Product #	Drive Size (in)	Torque Range (ft-lbs)	Torque Range (in-lbs)	Torque Range (nm)	Overall Length (in)	Weight (lbs)	Battery Type	Storage Case
J6280TA100	3/8	5-99.5	60-1195	6.8-135	3-23/64	0.70	2 AAA included	J6310PB
J6280TA150	1/2	7.4-147.5	88-1770	10-200	3-23/64	0.70	2 AAA included	J6415PB
J6280TA250	1/2	12.5-250.7	150-3009	17-340	3-23/64	0.70	2 AAA included	J6425PB

ASME B107.2B

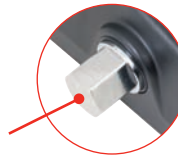
DIGITAL ADAPTERS & ELECTRONIC TESTERS

ELECTRONIC TORQUE TESTERS

- › Digital torque tester with LCD screen and audible beeps.
- › Main power with adapter.
- › Accurate to +/- 1% CW / +/- 3% CCW.
- › Measuring Units: ft-lbs, in-lbs, and Nm.
- › Operation modes include Peak, Hold and Dial modes.
- › Include blow mold case with AC/DC adapter, manual and calibration certificate.
- › Width (in): 5-19/32
- › Height (in): 3-1/2
- › Overall Length (in): 6-13/32

J6478E

Male 6 point drive
(use with 27mm socket).



Female square drive.

J6476E

Product #	Drive Size (in)	Drive Size (mm)	Torque Range (ft-lbs)	Torque Range (in-lbs)	Weight (lbs)
J6470E	1/4	-	.40-4.0	5-50	10.50
J6472E	3/8	-	2-20.8	25-250	11.00
J6474E	3/8	-	5-50	-	11.00
J6476E	1/2	-	25-250	-	11.00
J6478E	-	27 hex	60-600	-	11.60

CALIBRATION BENCH

- ▶ Helps ensure manual and electronic torque wrenches comply with ASME B107.300-2010, which requires calibration every 12 months or 5,000 clicks. Customer specification may exceed this.
- ▶ For use with J657 series sensors.
- ▶ 735 Ft. Lbs capacity.

Product #	Torque Range (ft-lbs)	Width (in)	Height (in)	Overall Length (in)	Weight (lbs)
J657B	1-735	13-1/2	25-13/32	65-3/4	247

CALIBRATION SENSORS

- ▶ ASME compliant torque sensors for accurate check and calibration (ASME B107.300-2010).
- ▶ Calibrated accuracy < 0.5% from 10-100% of the capacity.
- ▶ Includes calibration certificate, fastening screws, manual and appropriate square drive adapter to allow step down in drive size for compatibility.
- ▶ Requires a host PC, running Windows and PROTO® calibration software (free download from torque.protoindustrial.com).

Product #	Drive Size (in)	Torque Range (ft-lbs)	Accuracy	Width (in)	Height (in)	Overall Length (in)	Weight (lbs)
J657-22	1/4	1-22	0.5% from 10-100%	3-1/8	3-1/8	5-3/4	2.66
J657-36	3/8	4-36	0.5% from 10-100%	3-1/8	3-1/8	5-3/4	2.86
J657-295	1/2	15-295	0.5% from 10-100%	3-1/8	3-1/8	5-3/4	2.86
J657-735	3/4	7.5-735	0.5% from 10-100%	4-3/4	4-1/4	6-3/4	10.58

CALIBRATION BENCH & SENSORS

1200:1 gearbox for accuracy during loading.

Adjustable handle pin to align with calibration marks.

Secure frame to maintain dimensional stability.

Tablet and Torque Wrench not included.

Durable aluminum housing.

Includes blow-mold case.

USB connection for power and data.

To access software and user guides, visit Torque.ProtoIndustrial.com



TORQUE MULTIPLIER DISPLAY WRENCHES

- › When placed between the torque multiplier and the fastener, the Proto® Torque Multiplier Display Wrench will display the actual torque applied to the fastener.
- › Precision Accuracy: + / - 1% in BOTH directions.



Product #	Drive Size (in)	Torque Range (ft-lbs)	Increments (ft-lbs)	Torque Range (nm)	Increments (nm)	Width (in)	Height (in)	Overall Length (in)	Weight (lbs)
J6349A	1	100-1000	1	133-1335	1	4	5	14-1/2	15.00
J6352	1	200-2000	1	267-2670	1	4	5	24	15.00



REACTION ARM TORQUE MULTIPLIERS

- › Proto® Torque Multipliers provide overload protection with replaceable output square drives that are designed to twist off at 3%-10% over maximum output capacity.
- › Standard torque accuracy is +/- 5% of reading.
- › Reaction system: tubular reaction bar.
- › Gear system: single stage planetary.
- › Anti-backlash device: self-contained, 3 position.
- › Includes extra male plug.



Product #	Certified Series	Input Drive (in)	Output Drive (in)	Max Rated Input	Max Rated Output	Torque Ratio	Head Depth (in)	Head Length (in)	Handle Length (in)	Overall Length (in)	Weight (lbs)	Repair Kit
J6202A	J6202ACERT	1/2	3/4	250 ft-lbs (339 Nm)	750 ft-lbs (1017 Nm)	1:3.0	3-3/32	2-13/16	5-1/4	8-19/32	4.00	-
J6212	J6212CERT	1/2	3/4	200 ft-lbs (271 Nm)	1200 ft-lbs (1626 Nm)	1:6	4	3-15/16	14-1/8	19-19/32	9.10	J6212RD
J6222	J6222CERT	1/2	1	162 ft-lbs (220 Nm)	2200 ft-lbs (2983 Nm)	1:13.6	5-3/4	4-1/16	14-1/8	19-19/32	15.20	J6222RD
J6232	J6232CERT	1/2	1	173 ft-lbs (235 Nm)	3200 ft-lbs (4338 Nm)	1:18.5	6-1/2	4-1/16	14-1/8	19-19/32	18.30	J6232RD



REACTION PLATE TORQUE MULTIPLIERS

- › Proto® Torque Multipliers provide overload protection with replaceable output square drives that are designed to twist off at 3%-10% over maximum output capacity.
- › Standard torque accuracy is +/- 5% of reading.
- › Reaction system: reaction plate with slave drive.
- › Gear system: three stage planetary.
- › Anti-backlash device: self-contained, 3 position.
- › Includes extra male plug.



Product #	Input Drive (in)	Output Drive (in)	Max Rated Input	Max Rated Output	Torque Ratio	Head Depth (in)	Head Length (in)	Overall Length (in)	Weight (lbs)	Repair Kit
J6234	1/2	1	162 ft-lbs (220 Nm)	2200 ft-lbs (2983 Nm)	1:13.6	5-1/2	4-7/8	14	17.20	J6222RD
J6242	1/2	1-1/2	189 ft-lbs (256 Nm)	5000 ft-lbs (6778 Nm)	1:26.5	8-3/4	5-5/8	14-29/32	34.00	J6242RD
J6252	1/2	1-1/2	154 ft-lbs (209 Nm)	8000 ft-lbs (10846 Nm)	1:52	10-3/4	5-13/16	15-3/16	50.30	J6252RD



TORQUE MULTIPLIER SQUARE DRIVE REPLACEMENT KITS

- › Proto® Torque Multipliers provide overload protection with replaceable output square drives that are designed to twist off at 3%-10% over maximum output capacity.

Product #	Drive Size (in)	Use With	Weight (lbs)
J6212RD	3/4	J6212, J6212CERT	0.20
J6222RD	1	J6222, J6222CERT, J6234	0.53
J6232RD	1	J6232, J6232CERT	0.56
J6242RD	1-1/2	J6242	1.55
J6252RD	1-1/2	J6252	1.72



ACCESSORY AIR DRIVE 200 FT-LBS

- › Powered input to a torque multiplier can reduce operator fatigue, increase productivity.
- › Designed to drive Proto® Torque Multipliers (except J6202A).
- › Maximum torque output: 200 ft-lbs (271 Nm).
- › Maximum running air pressure: 60 PSI.
- › Output free speed: 70 RPM.
- › Output rotation: clockwise and counterclockwise.



Product #	Drive Size (in)	Output Drive (in)	Diameter Maximum (in)	Overall Length (in)	Weight (lbs)
J6201	1/2	1/2 Sq. Male	3-1/8	16-1/4	11.00



AIR DRIVE CONVERTER 200 FT-LBS

- › Powered input to a torque multiplier can reduce operator fatigue, increase productivity.
- › Designed to drive Proto® Torque Multipliers (except J6202A) when used with an air or electric drive tool.
- › Not designed for use with Impact Tools.
- › Maximum torque output: 200 ft-lbs (271 Nm).
- › Maximum torque input: 38 ft-lbs (52 Nm).



Product #	Drive Size (in)	Input Drive (in)	Output Drive (in)	Torque Ratio	Diameter (in)	Overall Length (in)	Weight (lbs)
J6203	1/2	1/2	1/2 Sq. Male	1:5.2	3-1/8	4	5.50



3/8" DRIVE 9 PIECE TORQUE ADAPTER SET - 12 POINT

Product #: **J5100**

Contents	Description
J5112	Torque Adapter 3/8"
J5114	Torque Adapter 7/16"
J5116	Torque Adapter 1/2"
J5118	Torque Adapter 9/16"
J5120	Torque Adapter 5/8"
J5122	Torque Adapter 11/16"
J5124	Torque Adapter 3/4"
J5126	Torque Adapter 13/16"
J5128	Torque Adapter 7/8"

Weight (lbs): 1.32

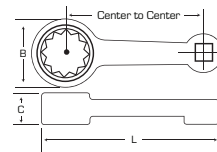
AS954E S3.8.1



- › Designed for easy torque calibrations.
- › Adapters measure 2" from the center of the square drive to the center of the adapter opening.
- › Special heat-treated alloy steel helps to increase strength and durability.
- › Box end wall thickness is specially engineered to provide strength while still allowing ample room for access to reach difficult fasteners.
- › 12 point box end allows for fine indexing, helping to improve speed and access. Fits 4, 6 and 12 point fasteners.



3/8" DRIVE TORQUE ADAPTERS - 12 POINT



Product #	Size (in)	Drive Size (in)	Head Width (in) (B)	Head Depth (in) (C)	Overall Length (in) (L)	Weight (lbs)
J5112	3/8	3/8	9/16	17/64	2-11/16	0.08
J5114	7/16	3/8	21/32	19/64	2-47/64	0.10
J5116	1/2	3/8	47/64	21/64	2-25/32	0.10
J5118	9/16	3/8	13/16	23/64	2-13/16	0.12
J5120	5/8	3/8	29/32	25/64	2-55/64	0.12
J5122	11/16	3/8	1	27/64	2-29/32	0.12
J5124	3/4	3/8	1-5/64	29/64	2-61/64	0.12
J5126	13/16	3/8	1-11/64	31/64	2-63/64	0.14
J5128	7/8	3/8	1-17/64	33/64	3-1/32	0.16

AS954E S3.8.1





TORQUE TESTER FLOOR STAND

- › Floor stand for Proto® Torque Testing systems makes installation quick and easy.
- › All steel construction.
- › Mounting holes predrilled to match Proto® test systems.
- › Floor mount holes are predrilled for securing to the floor.
- › Small footprint for space saving economy.
- › Durable powder coated paint.



Product #	Width (in)	Height (in)	Overall Length (in)	Use With	Weight (lbs)
J6470S	7	32	4	J6470, J6472, J6474, J6476, J6478	20.00



ELECTRONIC TORQUE TESTERS

- › Use to test all types of torque wrenches in all types of settings where full scale calibration is needed or where a quick Pass/Fail check is required.
- › Accuracy of +/- 1% of indicated value in both clockwise and counter clockwise directions.
- › Broad accuracy range extends from 10% to 100% of full scale.
- › Three units of measure are available Ft-lb, In-lb, and Nm.
- › Three operating modes: Track Mode, Peak Hold and First Peak (for use with Click-style Torque wrenches).
- › Fast sampling rate helps maintain high accuracy during torque applications.
- › Each tester is built with a male square drive and also comes supplied with a female-to-female square drive adapter.
- › Powered by a standard 9V battery, providing up to 50 hours run time. (non-"C" version)
- › N.I.S.T. (National Institute of Standards and Technology) traceable certification supplied with each tester.
- › Optional all-steel stand (J6470S) provides a strong support with minimal footprint.
- › Testers meet or exceed requirements set forth in ASME B107.29



Product #	USB Version #	Drive Size (in)	Torque Range (ft-lbs)	Torque Range (in-lbs)	Increments (ft-lbs)	Increments (in-lbs)	Width (in)	Height (in)	Overall Length (in)	Weight (lbs)
J6470	J6470-C	1/4	0.42-4.17	5-50	0.01	0.01	6	4-1/2	6	6.00
J6472	J6472-C	3/8	2.1-20.8	25-250	0.01	0.10	6	4-1/2	6	6.00
J6474	J6474-C	3/8	5-50	60-600	0.01	0.10	6	4-1/2	6	6.00
J6476	J6476-C	1/2	25-250	300-3000	0.10	1.00	6	4-1/2	6	6.00
J6478	J6478-C	3/4	60-600	720-7200	0.10	1.00	6	4-1/2	6	6.00

9 Volt battery included

ASME B107.29

ELECTRONIC TORQUE METER

- › The Proto® Electronic Torque Meter is a true all-in-one torque meter.
- › The Proto® Electronic Torque Meter provides the maximum flexibility in lab and production applications. This system meets a broad range of needs from demanding users.
- › It can help eliminate the need for multiple electronic torque wrenches and testers. The system grows as the demands of the user grow.
- › Ideal for use in production (application of torque), quality control (verification of torque) and for the calibration and or verification of torque wrench accuracy (calibration labs and kit rooms).
- › Easy to learn and use. Anyone can be up and running in seconds. Unit designed with the end user in mind.



Product #	Width (in)	Height (in)	Overall Length (in)	Weight (lbs)	Battery Type
J6360B	3-1/4	2	7-1/4	2.34	9 volt included

ASME B107.29

0.5% IN-LINE EXTENSION TRANSDUCERS

- › In-line extension transducers, connect between a wrench and a socket to measure the torque that is applied to a fastener. This versatile type of transducer converts a hand held torque meter (J6360) into a highly accurate digital torque wrench. In-line transducers can also be used as torque wrench testers when mounted to a fixture.
- › N.I.S.T. traceable certificate included.



Product #	Drive Size (in)	Torque Range (ft-lbs)	Torque Range (in-lbs)	Width (in)	Height (in)	Overall Length (in)	Use With	Weight (lbs)
J6361B	3/8	–	25-250	1-1/4	3-1/4	1-1/4	J6360	0.52
J6362B	3/8	5-50	–	1-1/4	3-1/4	1-1/4	J6360	0.55
J6363	1/2	15-150	–	1-7/16	3-5/8	1-7/16	J6360	0.79
J6364B	1/2	25-250	–	1-7/16	3-5/8	1-7/16	J6360	0.89

ASME B107.29

0.25% BENCH MOUNT TRANSDUCERS

- › "Plug and play" torque transducers. Automatic set-up of transducers means user friendly operation and less down time.
- › Versatile all-in-one unit can be used as both an accurate torque wrench and as an accurate torque tool tester. No need to own separate torque testers and electronic torque wrenches.
- › First peak of torque mode allows hand calibration of click type torque wrenches.
- › Memory for traceability.
- › N.I.S.T. traceable certificate included.

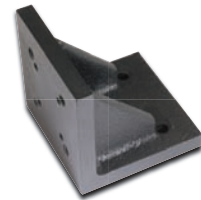


Product #	Drive Size (in)	Torque Range (ft-lbs)	Torque Range (in-lbs)	Width (in)	Height (in)	Overall Length (in)	Use With	Weight (lbs)
J6365B	1/4	–	10-100	2-3/4	2-1/4	2-3/4	J6360B	0.90
J6366B	3/8	–	25-250	2-3/4	2-3/4	2-3/4	J6360B	0.83
J6367B	3/8	5-50	–	2-3/4	2-3/4	2-3/4	J6360B	1.13
J6368B	1/2	25-250	–	4	3-3/4	4	J6360B	3.14
J6369B	3/4	50-500	–	4	4-5/8	4	J6360B	3.16
J6371B	1/4	–	5-50	2-3/4	2-1/4	2-3/4	J6360B	0.60
J6372B	1/2	15-150	–	4	3-3/4	4	J6360B	0.60
J6373B	3/4	60-600	–	4	4-5/8	4	J6360B	0.90
J6374B	1	100-1000	–	6	5	8-1/2	J6360B	0.90
J6375B	1	200-2000	–	6	5	8-1/2	J6360B	0.90

ASME B107.29

BRACKET FOR BENCH MOUNT TRANSDUCERS

- › Heavy-duty mounting bracket for bench mount transducers.
- › Use up to 600 ft-lbs.



Product #	Width (in)	Height (in)	Overall Length (in)	Use With	Weight (lbs)
J6370	5	5	5	J6365B, J6366B, J6367B, J6368B, J6369B, J6371B, J6372B, J6373B, J6374B, J6375B	5.75